

Eastern Offerings:

- RF predictive modeling, spectrum analysis and troubleshooting
- Wireless site surveys: passive & "AP on stick"
- Device staging, installation, and configuration
- Wireless audits and network needs assessments
- Robust wireless security solutions
- Comprehensive Guest Wi-Fi solutions
- Enterprise Mobility Management
- High-density wireless
- Advance wireless design and troubleshooting
- Private LTE and 5G design and implementation

Reliable, accessible wireless and mobile communication tools are crucial for maintaining internal and external business communications.

The Eastern Enterprise Networking and Wireless team works closely with businesses to identify unique wireless demands and mobility needs.

Service Overview

Our team provides turn-key wireless and mobility design. We offer enterprise class wireless surveys for auditing & assessment, predictive, passive and "AP on stick" surveys as well as detailed reporting. High level and low-level design services for controller, cloud-based, and SD-WAN infrastructure. Device staging, installation, and configuration services. Also cutover, turn up and extensive training and post deployment support.

Benefits

Increased Efficiency

- Improved data communication and faster transfer of data
- Increased productivity, access control & convenience with mobile operations

Reduced Costs

- Less expensive than upgrading the wired infrastructure
- Ability to scale to higher capacity of users for limited investment

Value Added Service

- Guest Wi-Fi solutions to increase loyalty and customer satisfaction

Methodology

Using tools such as Ekahau and subject matter experts with a broad and detailed understanding of enterprise architecture/design and industry standards, Eastern analyzes the collective findings to identify overarching concerns, coverage issues, security concerns, roaming issues and other areas not meeting best practices.

\$9.2M

Average annual business productivity gains (per 5,000-user org)

75%

Reduction in time spent onboarding and on moves, adds and changes (hours)

34%

Reduction in infrastructure cost



Infrastructure
Modernization



Assessments



Architecture
Planning & Design



Negotiation &
Procurement



Staging
JIT Delivery



Installation
Delivery

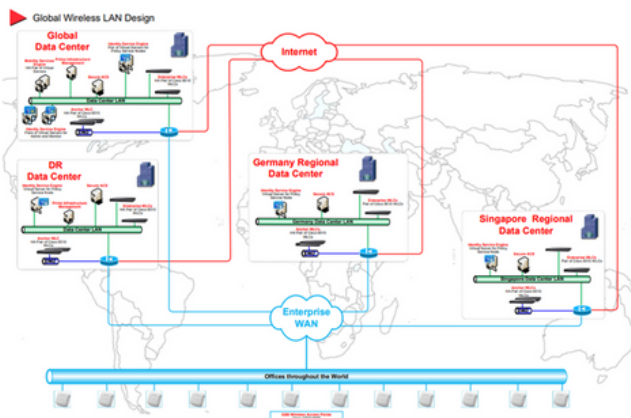


Project
Management

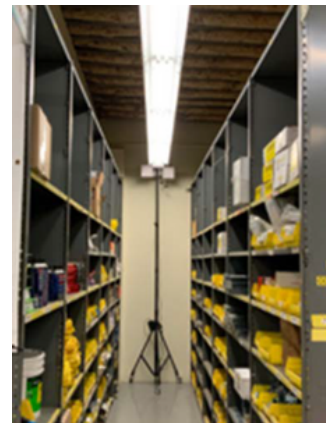
DELIVERABLES

Upon engagement completion, Eastern presents a final report highlighting the findings and data with an extensive knowledge transfer including post implementation support and trainings.

High-Level & Low-Level Design



Access Point Installation Guide



Installation Notes:

- MR-86 Access Point with 2-Meraki MA-ANT 25 antennas
- Centered on aisle 22-23 on back wall height 11'6"
- Downtilt 20 degrees

RF Heat maps & Spectrum Analysis Data



WHY EASTERN?

Eastern Computer Exchange has over three decades of experience providing end to end enterprise technology solutions to customers on five continents across the globe. As the highest certification partner for industry-leading IT manufacturers, Eastern has a proven track record of architecture, design and deployment of transformational solutions including Wireless, Cloud, Hybrid Cloud, Desktop, Remote, Security, Managed Services, As-A-Service and all things Data Center.